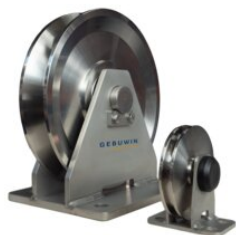


Pulley Block Stainless Steel KB150-6500

Product information



The stainless steel pulley blocks from Gebuwin's product range are suitable for both hand and electric winches. The wheel and frame is made of stainless steel 316 and fitted with bearings. The pulley blocks are used to guide the cable to the location where the load has to be moved. A fine way to make moving your load easier.

- suitable for electric and manual winches
- pulley wheel: stainless steel AISI 316 except 150 kg and 300 kg models: AISI 304
- bracket: stainless steel AISI 316 except 150 kg and 300 kg models: AISI 304
- plain bearing

Options:

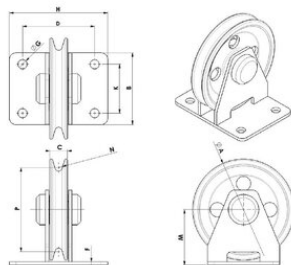
- ATEX suitable

... [Read more](#)

Marking: CE-marked, UKCA-marked

Pulley Block Stainless Steel KB150-6500

Blueprint



Technical data

| Rope Ø range | WLL ton | Model | Material | A mm | B mm | C mm | D mm | F mm | G mm | H mm | K mm | M mm | N mm | P mm | Bec kg |
|--------------|---------|------------|----------|------|------|------|------|------|------|------|------|------|------|------|--------|
| 8 | 0,15 | KB150 SST | AISI 304 | 75 | 60 | 18 | 65 | 5 | 11 | 90 | 35 | 48 | 4,2 | 67 | 1 |
| 9 | 0,3 | KB300 SST | AISI 304 | 100 | 65 | 21 | 70 | 5 | 11 | 100 | 35 | 60 | 4,8 | 90 | 1,36 |
| 6 | 0,5 | KB500 SST | AISI 316 | 85 | 60 | 21 | 65 | 5 | 11 | 90 | 35 | 53 | 3,2 | 66 | 1 |
| 9 | 1 | KB1000 SST | AISI 316 | 125 | 110 | 30 | 80 | 6 | 14 | 120 | 75 | 71 | 4,8 | 139 | 3 |
| 14 | 2 | KB2000 SST | AISI 316 | 180 | 165 | 38 | 105 | 8 | 17 | 155 | 115 | 103 | 7 | 149 | 6,5 |
| 18 | 4 | KB4000 SST | AISI 316 | 240 | 200 | 50 | 140 | 10 | 21 | 195 | 145 | 135 | 9,5 | 204 | 11,5 |
| 24 | 6,5 | KB6500 SST | AISI 316 | 300 | 240 | 60 | 155 | 12 | 21 | 215 | 180 | 167 | 12,5 | 255 | 21 |