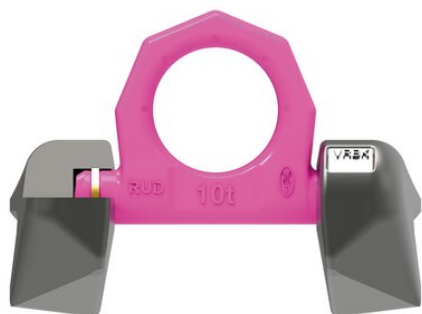


Weld-on Lifting Ring RUD VRBK-FIX

Product information

Load ring for edge attachments. Welded on the corner reduces the number of lifting points. Loadable in any direction. Low profile and 270° pivoting.

... [Read more](#)



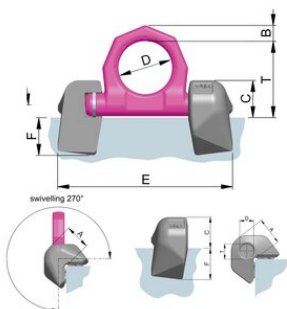
Marking: According to standard

Standard: EN 1677-1

Safety factor: 4:1.

Weld-on Lifting Ring RUD VRBK-FIX

Blueprint



Technical data

| Код товара | Код | WLL ton | A mm | B mm | C mm | D mm | E mm | F mm | T mm | Бec kg |
|--------------|----------------|---------|------|------|------|------|------|------|------|--------|
| 11.427902149 | VRBK-FIX 4 t | 4 | 32 | 14 | 28 | 48 | 141 | 30 | 65 | 1 |
| 11.427902150 | VRBK-FIX 6.7 t | 6,7 | 40 | 20 | 35 | 60 | 181 | 34 | 84 | 2,16 |
| 11.427902256 | VRBK-FIX 10 t | 10 | 52 | 22 | 46 | 65 | 212 | 46 | 94 | 4,4 |
| 11.427904653 | VRBK-50 t | 50 | 134 | 70 | 118 | 230 | 626 | 96 | 303 | 76,35 |