

Weld-on lifting point NS8HI, grade 80

Product information

Weld-on lifting point for all lifting directions. Equipped with a spring that holds the eye in desired position.

[... Read more](#)



Material: Steel

Marking: According to standard, CE-marked

Temperature range: -40°C - (+)200°C

Finish: Painted, yellow

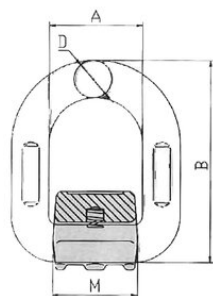
Standard: EN 1677-1

Safety factor: 4:1

Grade: 8

Weld-on lifting point NS8HI, grade 80

Blueprint



Technical data

Part code	WLL ton	A mm	B mm	D mm	M mm	Weight kg
46040006F	1.12	41	78.5	13	37	0.4
46040007F	2	42	88	14	40	0.47
46040008F	3.15	45	94	17	42.5	0.69
46040009F	5.3	55	118	22	50	1.46
46040010F	8	70	141	26.5	66.5	2.5
46040029F	15	97	188	34	90	5.79

WORKING LOAD LIMITS

Product	WLL (t)	WLL (t)	WLL (t)	WLL (t)	WLL (t)	WLL (t)	WLL (t)	WLL (t)
					0 - 45°	45-60°	0 - 45°	45-60°
NS8HI1	1,12	1,12	2,24	2,24	1,57	1,12	2,35	1,68
NS8HI2	2	2	4	4	2,8	2	4,2	3
NS8HI3	3,15	3,15	6,3	6,3	4,41	3,15	6,62	4,73
NS8HI5	5,3	5,3	10,6	10,6	7,42	5,3	11,13	7,95
NS8HI8	8	8	16	16	11,2	8	16,8	12
NS8HI15	15	15	30	30	21	15	31,5	22,5