

Stainless steel Lifting eye screw NSRHL DIN 580

Product information

Stainless steel lifting eye for vertical lifting.

[... Read more](#)



Material: AISI 316

Marking: According to standard, CE-marked

Temperature range: -40°C - (+)200°C

Finish: Polished

Standard: DIN 580

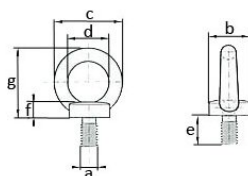
Note: Only for vertical lifting

Warning: Not to be heat-treated

Safety factor: 4:1

Stainless steel Lifting eye screw NSRHHL DIN 580

Blueprint



Technical data

| Part code | WLL ton | Thread mm | b mm mm | c mm | dmm mm | e mm mm | f mm mm | g mm mm | Weight kg |
|-----------|---------|-----------|---------|------|--------|---------|---------|---------|-----------|
| NSRH06L | 0.075 | M6 | 20 | 36 | 20 | 13 | 6 | 36 | 0.06 |
| 48020011F | 0.14 | M8 | 20 | 36 | 20 | 13 | 6 | 36 | 0.06 |
| 48020006F | 0.23 | M10 | 25 | 45 | 25 | 17 | 8 | 45 | 0.11 |
| 48020002F | 0.34 | M12 | 30 | 54 | 30 | 20.5 | 10 | 53 | 0.18 |
| 48020003F | 0.7 | M16 | 35 | 63 | 35 | 27 | 12 | 62 | 0.28 |
| 48020004F | 1.2 | M20 | 39 | 71 | 39 | 30 | 14 | 70 | 0.45 |

WORKIN LOAD LIMITS

| Thread | WLL (t) | WLL (t) | WLL (t) | WLL (t) | WLL (t) | WLL (t) | WLL (t) | WLL (t) |
|--------|---------|---------|---------|---------|---------|---------|---------|---------|
| | | | | | 0 - 45° | 45-60° | 0 - 45° | 45-60° |
| M6 | 0,08 | | 0,16 | | - | | - | |
| M8 | 0,14 | | 0,28 | | 0,1 | | 0,14 | |
| M10 | 0,23 | | 0,46 | | | | | |