

Lifting Eye Screw NS8R

Product information



Lifting for all lifting directions.

WLL for vertical lifting is marked on the eye.

The depth of the threaded hole has to be minimum:

d = diameter of the lifting eye thread

- $1*d$ for steel
- $1,25*d$ for cast iron
- $2*d$ for aluminum alloys
- $2,5*d$ for aluminum magnesium alloys

... [Read more](#)

Material: Steel

Marking: According to standard, CE-marked

Temperature range: -40°C - $+200^{\circ}\text{C}$

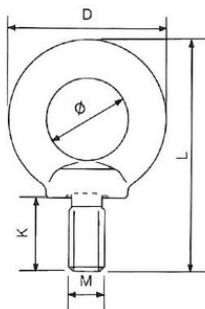
Finish: Painted, yellow

Standard: EN 1677-1

Safety factor: 4:1

Lifting Eye Screw NS8R

Blueprint



Technical data

| Part code | WLL ton | Thread mm | Eye diameter mm | Thread pitch mm | D mm | L mm | K mm | M mm | ø mm mm | Weight kg |
|-----------|---------|-----------|-----------------|-----------------|------|------|------|------|---------|-----------|
| 46010013F | 0.4 | M6 | 16 | 1 | 28 | 42 | 13 | M6 | 16 | 0.05 |
| 46010014F | 0.8 | M8 | 20 | 1,25 | 39 | 51 | 15 | M8 | 20 | 0.06 |
| 46010015F | 1 | M10 | 25 | 1,5 | 45 | 63 | 18 | M10 | 25 | 0.11 |
| 46010016F | 2 | M12 | 30 | 1,75 | 54 | 75 | 22 | M12 | 30 | 0.18 |
| 46010017F | 3 | M14 | 35 | 2 | 63 | 88 | 28 | M14 | 35 | 0.28 |
| 46010018F | 4 | M16 | 35 | 2 | 63 | 88 | 28 | M16 | 35 | 0.28 |
| 46010019F | 6 | M20 | 40 | 2,5 | 72 | 101 | 30 | M20 | 40 | 0.45 |
| 46010020F | 8 | M24 | 50 | 3 | 90 | 128 | 38 | M24 | 50 | 0.87 |
| 46010021F | 12 | M30 | 60 | 3,5 | 108 | 154 | 45 | M30 | 60 | 1.66 |
| 46010022F | 16 | M36 | 70 | 4 | 126 | 183 | 55 | M36 | 70 | 2.65 |
| 46010023F | 24 | M42 | 80 | 4,5 | 144 | 212 | 65 | M42 | 80 | 4.03 |
| 46010024F | 32 | M48 | 90 | 5 | 166 | 238 | 70 | M48 | 90 | 6.38 |

Lifting Eye Screw NS8R

| Size | WLL (t) | WLL (t) | WLL (t) | WLL (t) | WLL (t) | WLL (t) | WLL (t) | WLL (t) | Tightening torque |
|------|---------|---------|---------|---------|---------|---------|---------|---------|-------------------|
| | | | | | | | | | |
| M6 | 0,4 | 0,15 | 0,8 | 0,3 | 0,21 | 0,15 | 0,32 | 0,23 | 3,5 |
| M8 | 0,8 | 0,32 | 1,6 | 0,64 | 0,448 | 0,32 | 0,672 | 0,48 | 8 |
| M10 | 1 | 0,4 | 2 | 0,8 | 0,56 | 0,4 | 0,84 | 0,6 | 16 |
| M12 | 2 | 0,75 | 4 | 1,5 | 1,05 | 0,75 | 1,58 | 1,13 | 28 |
| M14 | 3 | 1,2 | 6 | 2,4 | 1,68 | 1,2 | 2,52 | 1,8 | 70 |
| M16 | 4 | 1,5 | 8 | 3 | 2,1 | 1,5 | 3,15 | 2,25 | 70 |
| M20 | 6 | 2,3 | 12 | 4,6 | 3,22 | 2,3 | 4,83 | 3,45 | 135 |
| M24 | 8 | 3,2 | 16 | 6,4 | 4,48 | 3,2 | 6,72 | 4,8 | 230 |
| M30 | 12 | 4,5 | 24 | 9 | 6,3 | 4,5 | 9,45 | 6,75 | 465 |
| M36 | 16 | 7 | 32 | 14 | 9,8 | 7 | 14,7 | 10,5 | 814 |
| M42 | 24 | 9 | 48 | 18 | 12,6 | 9 | 18,9 | 13,5 | 1304 |
| M48 | 32 | 12 | 64 | 24 | 16,8 | 12 | 25,2 | 18 | 1981 |