

## Lifting eye screw NSR DIN 580

---

### Product information

Lifting eye screws for vertical lifting

... [Read more](#)



**Features:** Only for vertical lifting

**Material:** Steel

**Marking:** According to standard, CE-marked

**Temperature range:** -20°C - (+)200°C

**Finish:** Electro galvanized

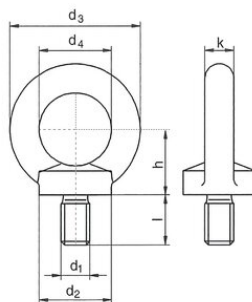
**Standard:** DIN 580

**Note:** Larger sizes and inch sizes also available

**Safety factor:** 4:1

# Lifting eye screw NSR DIN 580

## Blueprint



## Technical data

Part code	WLL ton	Thread mm	Packing	Thread pitch mm	d1 mm mm	d2 mm mm	d3 mm mm	d4 mm mm	h mm mm	k mm mm	l mm mm	Weight kg
46040030F	0.08	M6	50	1	M6	20	36	20	18	8	13	0.045
46040031F	0.14	M8	50	1,25	M8	20	36	20	18	8	13	0.05
46040019F	0.23	M10	50	1,5	M10	25	45	25	22.5	10	17	0.09
46040020F	0.34	M12	25	1,75	M12	30	54	30	26	12	20.5	0.16
46040032F	0.34	M14	25	2	M14	35	63	35	30.5	14	27	0.24
46040021F	0.7	M16	10	2	M16	35	63	35	30.5	14	27	0.24
46040022F	1.2	M20	10	2,5	M20	40	72	40	35	16	30	0.36
46040023F	1.8	M24	1	3	M24	50	90	50	45	20	36	0.72
46040041F	3.2	M33	1	3,5	M33	65	108	60	55	24	45	1.3
46040024F	3.2	M30	1	3,5	M30	65	108	60	55	24	45	1.32
46040043F	4.6	M39	1	4	M39	75	126	70	65	28	54	2.02
46040042F	4.6	M36	1	4	M36	75	126	70	65	28	54	2.08
46040045F	6.3	M45	1	4,5	M45	85	144	80	75	32	63	3.04
46040044F	6.3	M42	1	4,5	M42	85	144	80	75	32	63	3.11
46040047F	8.6	M52	1	5	M52	100	166	90	85	38	68	4.95
46040046F	8.6	M48	1	5	M48	100	166	90	85	38	68	5.02
46040048F	11.5	M56	1	5,5	M56	110	184	100	95	42	78	6.69
46040049F	16	M64	1	6	M64	120	206	110	105	48	90	9.3

## WORKING LOAD LIMITS

## Lifting eye screw NSR DIN 580



Thread	WLL (t)	WLL (t)	WLL (t)	WLL (t)	WLL 0-45° (t)	WLL 45-60° (t)	WLL 0-45° (t)	WLL 45-60° (t)
M6	0,08	Not allowed	0,16	Not allowed	0,05	Not allowed	0,08	Not allowed
M8	0,14	Not allowed	0,28	Not allowed	0,1	Not allowed	0,14	Not allowed
M10	0,23	Not allowed	0,46	Not allowed	0,17	Not allowed	0,23	Not allowed
M12	0,34	Not allowed	0,68	Not allowed	0,24	Not allowed	0,34	Not allowed
M14	0,34	Not allowed	0,68	Not allowed	0,24	Not allowed	0,34	Not allowed
M16	0,7	Not allowed	1,4	Not allowed	0,5	Not allowed	0,7	Not allowed
M18	0,85	Not allowed	1,7	Not allowed	0,6	Not allowed	0,85	Not allowed
M20	1,2	Not allowed	2,4	Not allowed	0,83	Not allowed	1,2	Not allowed
M22	1,2	Not allowed	2,4	Not allowed	0,83	Not allowed	1,2	Not allowed
M24	1,8	Not allowed	3,6	Not allowed	1,27	Not allowed	1,8	Not allowed
M27	2,1	Not allowed	4,2	Not allowed	1,49	Not allowed	2,1	Not allowed
M30	3,2	Not allowed	6,4	Not allowed	2,28	Not allowed	3,2	Not allowed
M33	3,2	Not allowed	6,4	Not allowed	2,28	Not allowed	3,2	Not allowed
M36	4,6	Not allowed	9,2	Not allowed	3,28	Not allowed	4,6	Not allowed
M39	4,6	Not allowed	9,2	Not allowed	3,28	Not allowed	4,6	Not allowed

## Lifting eye screw NSR DIN 580

M42	6,3	Not allowed	12,6	Not allowed	4,5	Not allowed	6,3	Not allowed
M45	6,3	Not allowed	12,6	Not allowed	4,5	Not allowed	6,3	Not allowed
M48	8,6	Not allowed	17,2	Not allowed	6,1	Not allowed	8,6	Not allowed
M52	8,6	Not allowed	17,2	Not allowed	6,1	Not allowed	8,6	Not allowed
M56	11,5	Not allowed	23	Not allowed	8,3	Not allowed	11,5	Not allowed
M64	16	Not allowed	32	Not allowed	11	Not allowed	16	Not allowed
M72	20	Not allowed	40	Not allowed	14,28	Not allowed	20	Not allowed
M80	28	Not allowed	56	Not allowed	20			