

## Lifting eye nuts NSM DIN 582

---

### Product information

Lifting eye nuts for vertical lifting

... [Read more](#)



**Features:** Only for vertical lifting

**Material:** Steel

**Marking:** According to standard, CE-marked

**Temperature range:** -20°C - (+)200°C

**Finish:** Electro galvanized

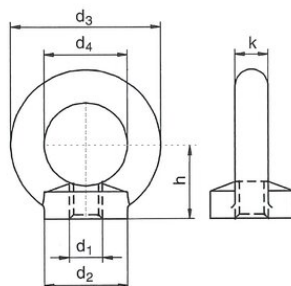
**Standard:** DIN 582

**Note:** Larger sizes and inch sizes also available

**Safety factor:** 4:1

## Lifting eye nuts NSM DIN 582

### Blueprint



### Technical data

Part code	WLL ton	Thread mm	Packing	Thread pitch mm	d1 mm mm	d2 mm mm	d3 mm mm	d4 mm mm	h mm mm	k mm mm	Weight kg
46040033F	0.06	M6	50	1	M6	20	36	20	18	8	0.045
46040034F	0.14	M8	50	1,25	M8	20	36	20	18	8	0.05
46040014F	0.23	M10	50	1,5	M10	25	45	25	22.5	10	0.09
46040015F	0.34	M12	25	1,75	M12	30	54	30	26	12	0.16
46040035F	0.34	M14	25	2	M14	35	63	35	30.5	14	0.24
46040016F	0.7	M16	10	2	M16	35	63	35	30.5	14	0.24
46040017F	1.2	M20	10	2,5	M20	40	72	40	35	16	0.36
46040018F	1.8	M24	1	3	M24	50	90	50	45	20	0.72

## WORKING LOAD LIMITS



Thread	WLL (t)	WLL (t)	WLL (t)	WLL (t)	WLL 0-45° (t)	WLL 45-60° (t)	WLL 0-45° (t)	WLL 45-60° (t)
M6	0,08	Not allowed	0,16	Not allowed	0,05	Not allowed	0,08	Not allowed
M8	0,14	Not allowed	0,28	Not allowed	0,1	Not allowed	0,14	Not allowed
M10	0,23	Not allowed	0,46	Not allowed	0,17	Not allowed	0,23	Not allowed

## Lifting eye nuts NSM DIN 582

M12	0,34	Not allowed	0,68	Not allowed	0,24	Not allowed	0,34	Not allowed
M14	0,34	Not allowed	0,68	Not allowed	0,24	Not allowed	0,34	Not allowed
M16	0,7	Not allowed	1,4	Not allowed	0,5	Not allowed	0,7	Not allowed
M18	0,85	Not allowed	1,7	Not allowed	0,6	Not allowed	0,85	Not allowed
M20	1,2	Not allowed	2,4	Not allowed	0,83	Not allowed	1,2	Not allowed
M22	1,2	Not allowed	2,4	Not allowed	0,83	Not allowed	1,2	Not allowed
M24	1,8	Not allowed	3,6	Not allowed	1,27	Not allowed	1,8	Not allowed
M27	2,1	Not allowed	4,2	Not allowed	1,49	Not allowed	2,1	Not allowed
M30	3,2	Not allowed	6,4	Not allowed	2,28	Not allowed	3,2	Not allowed
M33	3,2	Not allowed	6,4	Not allowed	2,28	Not allowed	3,2	Not allowed
M36	4,6	Not allowed	9,2	Not allowed	3,28	Not allowed	4,6	Not allowed
M39	4,6	Not allowed	9,2	Not allowed	3,28	Not allowed	4,6	Not allowed
M42	6,3	Not allowed	12,6	Not allowed	4,5	Not allowed	6,3	Not allowed
M45	6,3	Not allowed	12,6	Not allowed	4,5	Not allowed	6,3	Not allowed
M48	8,6	Not allowed	17,2	Not allowed	6,1	Not allowed	8,6	Not allowed
M52	8,6	Not allowed	17,2	Not allowed	6,1	Not allowed	8,6	Not allowed
M56	11,5	Not allowed	23	Not allowed	8,3	Not allowed	11,5	Not allowed
M64	16	Not allowed	32	Not allowed	11	Not allowed	16	Not allowed

## Lifting eye nuts NSM DIN 582

---

M72	20	Not allowed	40	Not allowed	14,28	Not allowed	20	Not allowed
M80								