

## Battery operated electric wire hoist for lifting and pulling 24V VANOS450A



### Product information

Light and easy to operate electrical winch for pulling and lifting. Stepless power control. Equipped with latch hook and overload indicator. 2 x powerfull 24V NiMh batteries and charger.

**Note!** Cable operating length 3,4 m

**Features:** Speed 2,5 m/min | Charging time 2 h

**Marking:** CE-marked

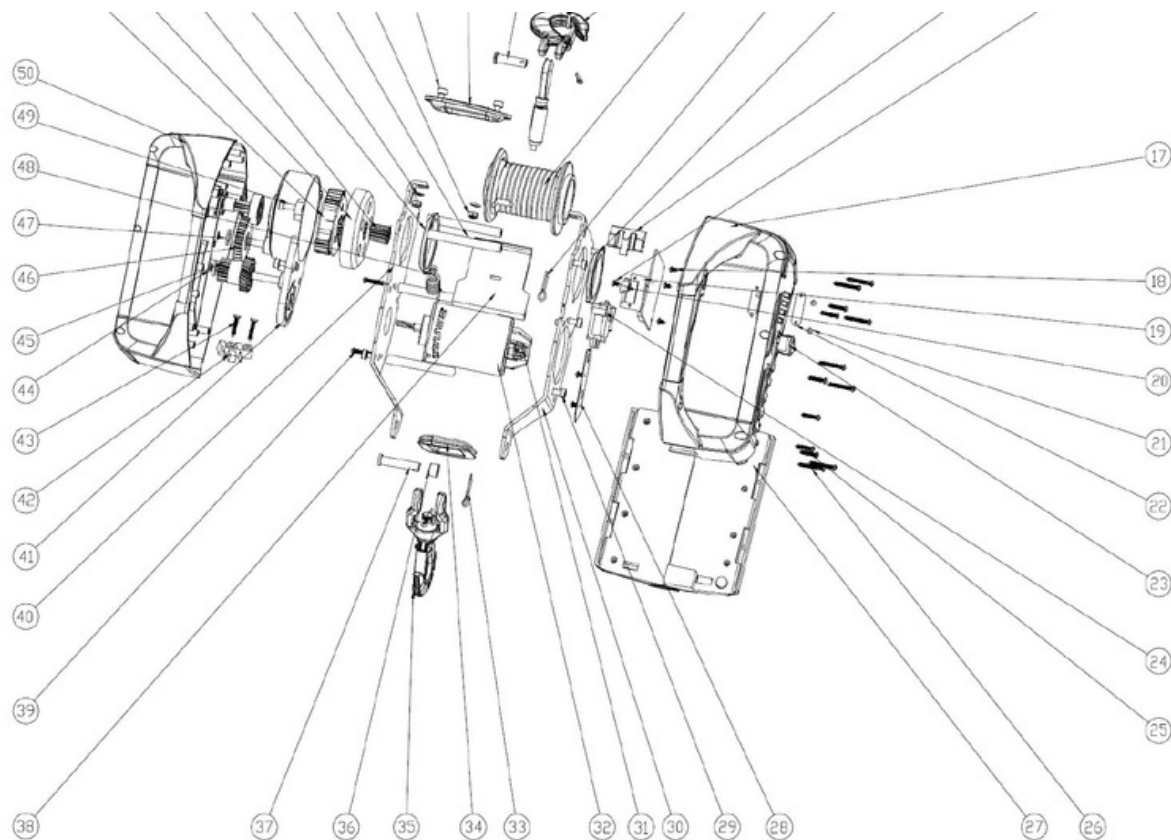
**Note:** Battery operated hoist doesn't include remote control

Part Code	WLL ton	Operation voltage (V)	Cable length m	Hoist motor kW	Type of battery	Weight kg	Delivery time
43070012F	0.45	24	4.6	0.75	2500 mAh	9.7	12

### Technical data

### SPARE PARTS





Spare part (product code)	Description	Suitable for hoist (product code)
VANOSVAI4,6	Wire rope 4,6 m   $\varnothing$ 5,8 mm, effective working length 3,4 m   Incl. drum	VANOS450A
VANOSAHILI	Coal	VANOS450A
VANOSLATURI	Charger   Part no. 51	VANOS450A
VANOSAKKU	Battery   Part no. 27	VANOS450A

Also other spare parts available with a delivery time, ask our sales for more information

