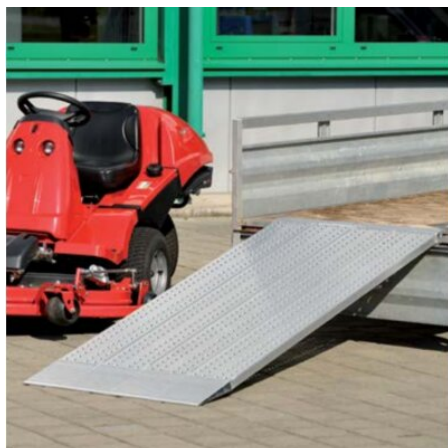


Loading Ramp AOS

Product information



The lightweight, non-slip loading ramp, such as type AOS, is made of a high-strength, extremely durable and weather-resistant aluminum alloy. Despite its low height and low weight, this loading ramp is characterized by its high load-bearing capacity. The AOS ramps from Altec are available in lengths of 1.5 to 3.5 m, widths of 20 to 80 cm and heights of 60 to 70 mm.

An access ramp is a stable, inclined surface in various sizes for overcoming a height difference for logistical purposes. The special AOS ramp from Altec GmbH in Singen is available in various sizes, which are listed under "Technical data".

The AOS loading ramp is supplied as standard with a tongue support, for suspension or with a pipe connection. At the lower end of the ramp, a wedge profile ensures that the ramp can be easily driven over between the floor and the start of the ramp. The driving surface of the AOS loading ramp is perforated and therefore particularly slip-resistant. Naturally, this ramp is equipped with an anti-slip device.

AOS ramps are ideal for loading transport equipment that is moved using small wheels with low ground clearance. For example, hand trucks with pneumatic tires or various hand pallet trucks can be used. The load capacity of the ramps is up to 2000 kiloponds, depending on the design. The load capacity specifications in the "Technical data" overview refer to vehicles with two axles and one axle ^{differential} [... Read more](#)

Material: Aluminium

Loading Ramp AOS

Technical data

Part code	Code	Load Capacity kg	Length mm	Width mm	Height mm	Weight kg
35130022F	AOS 200	870	1,505	215	450	6
35130023F	AOS 300	510	2,975	315	900	15