

Triangle link for webbing KB type 1

Product information

The Triangle Link for Webbing KB Type 1 is a robust male component designed for use in textile slings. It is intended for sling terminations, providing a stable and secure termination. Made from durable materials, the D-ring is load-resistant and offers reliability in demanding work conditions. This product is ideal for industrial and construction lifting applications, meeting high standards of quality and safety. [... Read more](#)



Marking: According to standard

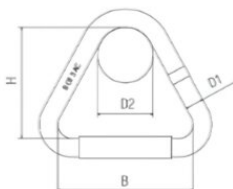
Finish: Galvanized

Standard: EN 1677

Safety factor: 6:1

Triangle link for webbing KB type 1

Blueprint



Technical data

Part code	Code	WLL ton	Dimensions mm	D1 mm mm	D2 mm mm	B mm	H mm	Weight kg
42040443B	KB01	1	45x60 (BxH)	12	30	45	60	0.2
42040444B	KB02	2	70x80 (BxH)	16	60	70	80	0.5
42040445B	KB03	3	106x120 (BxH)	20	90/100	106	120	1.1
42040446B	KB04	4	133x130 (BxH)	23	120	133	130	1.6
42040447B	KB05	5	170x180 (BxH)	26	150	170	180	2.69
42040448B	KB06	6	206x180 (BxH)	28	180	206	180	3
42040449B	KB08	8	280x200 (BxH)	32	240	280	200	5.8
42040450B	KB010	10	330x250 (BxH)	35	300	330	250	8.2