

## Weld-on Lifting Ring RUD VRBK-FIX

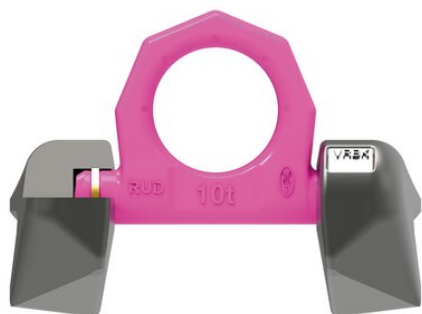
---

### Product information

Load ring for edge attachments. Welded on the corner reduces the number of lifting points. Loadable in any direction. Low profile and 270° pivoting.

... [Read more](#)

---



**Material:** CrNiMo Steel

**Marking:** According to standard

**Temperature range:** -20° to +200°C.

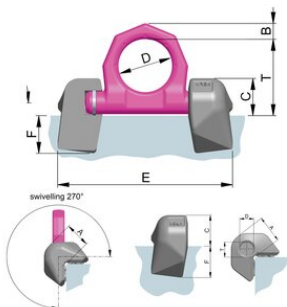
**Finish:** Pink powder coated.

**Standard:** EN 1677-1

**Safety factor:** 4:1.

## Weld-on Lifting Ring RUD VRBK-FIX

### Blueprint



### Technical data

Part code	Code	WLL ton	A mm	B mm	C mm	D mm	E mm	F mm	T mm	Weight kg
11.427902149	VRBK-FIX 4 t	4	32	14	28	48	141	30	65	1
11.427902150	VRBK-FIX 6.7 t	6.7	40	20	35	60	181	34	84	2.16
11.427902256	VRBK-FIX 10 t	10	52	22	46	65	212	46	94	4.4
11.427904653	VRBK-50 t	50	134	70	118	230	626	96	303	76.35