

Symmetrical rear pillar 4000XF 300mm

Produktinformation



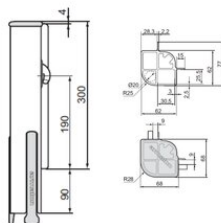
The Armaton 4000 XF symmetrical rear pillar with a height of 300 mm is a component of the platform pillar system, designed to provide stability and versatility in commercial vehicle bodies. Its symmetrical design allows installation on both the left and right sides, increasing application flexibility.

The pillar features a strong yet lightweight construction, enabling optimal use of the vehicle's payload capacity. Ergonomic design ensures ease of use in daily operations, while compatibility with the Armaton 4000 XF system allows seamless integration with other body components.

Made of anodized aluminum and high - quality components, it ensures durability, resistance to operating conditions, and virtually maintenance-free performance. [... Read more](#)

Symmetrical rear pillar 4000XF 300mm

Blaupause



Technische Daten

Artikel-Nr.	Modell	Gewicht (kg)
35070003F	Symmetrical rear pillar 4000XF 300mm	1,75