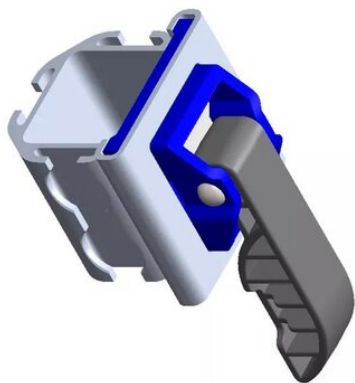


## Smartconnect

---

### Produktinformation



SMARTCONNECT is a mounting base that is part of the SMARTBAR system, designed for light commercial vehicles and transporters. With Airline profiles on three sides and an ergonomic handle, it allows quick installation of fastening and locking accessories. SMARTCONNECT offers the flexibility to mount at any height for increased transport safety. A variety of fastening systems can be used, including quick-release straps and Ø19 mm locking beams, allowing customization to meet specific cargo needs.

... [Read more](#)

---

# Smartconnect

---

## Technische Daten

Artikel-Nr.	Tragfähigkeit (kg)	Abmessungen (mm)	Gewicht (kg)
350500530	40	114x62x70	0,15